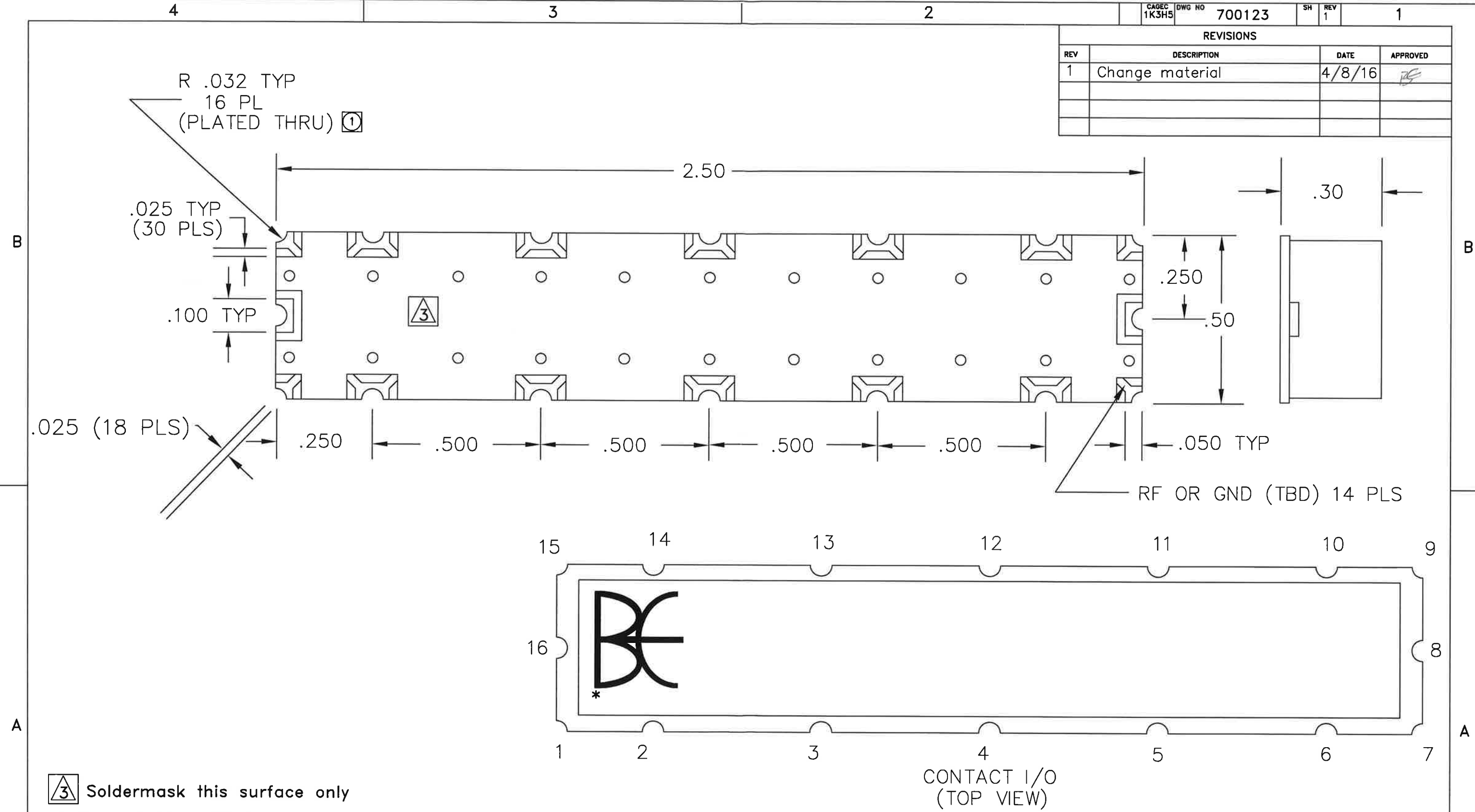


REVISIONS			
REV	DESCRIPTION	DATE	APPROVED
1	Change material	4/8/16	



- Soldermask this surface only
- 2 Contact 16 - RF IN
- Contact 8 - RF OUT
- All other contacts are ground
- Location of plated thru holes are to be held at +/- .005.

THE INFORMATION CONTAINED IN THIS DRAWING IS THE SOLE PROPERTY OF BREE ENGINEERING. ANY REPRODUCTION IN PART OR WHOLE WITHOUT THE WRITTEN PERMISSION OF BREE ENGINEERING IS PROHIBITED.

CONTACT I/O
(TOP VIEW)

UNLESS OTHERWISE SPECIFIED DIMENSIONS ARE IN INCHES & TOLERANCES ARE: .XXX .XX ANGLES ±.005 ±.01	CAD GENERATED DRAWING DO NOT MANUALLY UPDATE		BREE ENGINEERING
	DWN LN	DATE 2/22/05	
MATERIAL Nelco 4000-13-EP	CHK BE	DATE 2/25/05	OUTLINE
FINISH Nickel	RESP ENG	MFG ENG	
	QUAL ENG		SIZE CAGE CODE DWG NO REV B 1K3H5 700123 1
	Scale for REFERENCE ONLY		SCALE N/A SHEET 1 OF 1